



~ Wave Chi
Frederica Marshall

COST: \$200 Make check out to Frederica Marshall and give payment to Lynne Kemper. If mailed, the address is:
5213, SW 10th Avenue
Cape Coral, FL 33914

WORKSHOP: We will paint with Sumi-e ink on the front of the washi paper and add watercolor (Chinese or Oriental, not Western) to the back of the paper for a translucent glow.

SUPPLIES: Bring your own "usual" Sumi-e supplies: brushes, ink, palettes, 2 water containers, paper weights, Oriental watercolors, sketch pad, paper towels, black felt pad, tissues, etc. Frederica will bring supplies for landscape painting and rice paper collage.

Composition will be stressed.
Bring your references and/or sketches to the workshop.

LOCATION:

Cape Coral Art League Gallery
516 Cultural Boulevard
Cape Coral, FL 33990

PHONE: (239) 772-5657 (CCAL)
(239) 246-2030 (Lynne)

BRING YOUR OWN LUNCH.

We will supply coffee, tea, creamer, sugar or sweetener, water, and banana bread.

~ *Lonely Pine* by Frederica Marshall



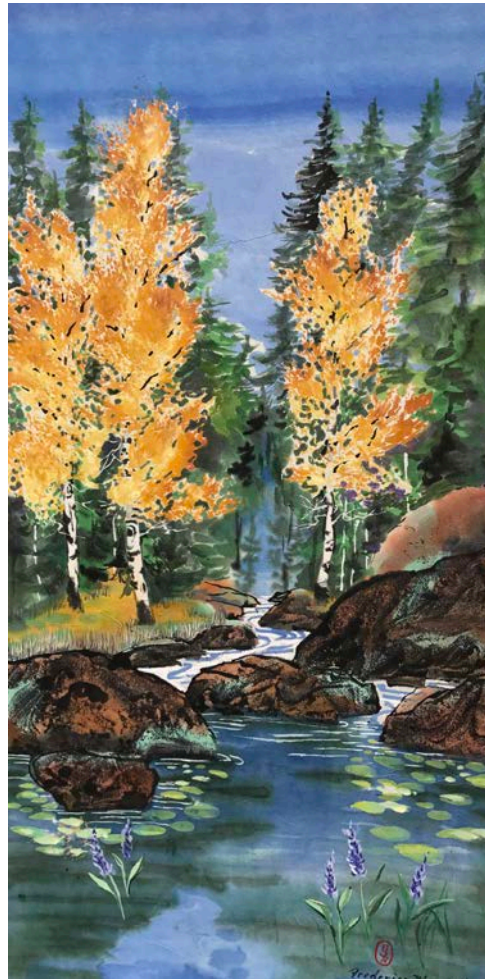
BIOGRAPHY

International and National Award-winning artist Frederica Marshall has her own gallery and art school in Deer Isle, Maine.

She has taught more than 23,000 students in Japan, China and the United States. Some of the places she has taught are The Ringling School of Art-Sarasota, Florida; Los Angeles Metro College - Los Angeles, California; Wildacres - North Carolina; Lyon College-Arkansas; Selby Florida and Maine Coastal Botanical Gardens; Venice and Longboat Art Centers; and the Cape Coral Art League.

Visit Frederica's website at fredericamarshall.com to see more of her creative work, philosophy, and teaching experience.

In this two-day Sumi-e workshop with Frederica Marshall, you can learn amazing Asian texture and brushstroke techniques used to create the beauty of nature.



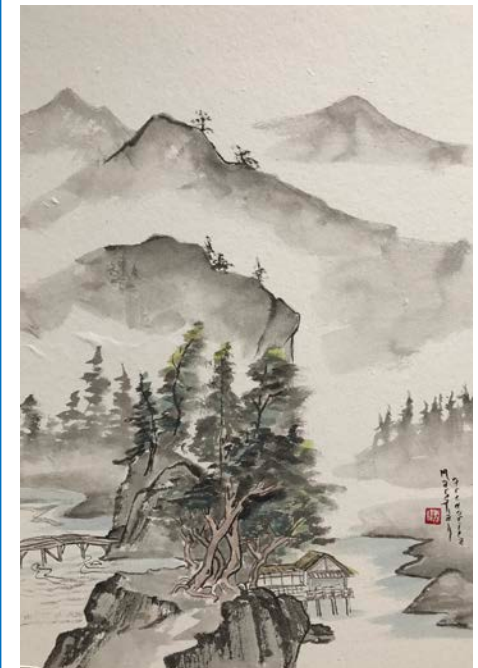
~ *Autumn Birches*
Frederica Marshall

Frederica Marshall

*Landscape in Sumi-e
Workshop*

February 2 & 3, 2019

10:00 AM - 3:00 PM



~ *Teahouse by the Stream*
Frederica Marshall